



LEWIS NOBLE



Morro Bay, California II
mixed media on gesso panel 20 x 20 cm

LEWIS NOBLE

California Pacific

13 NOVEMBER – 3 DECEMBER


campden
gallery

California Pacific

Since visiting the California coast in 2008, I have always wanted to return with the intention of making a more substantial body of work. This year I had that opportunity and knowing I was exhibiting at the Campden Gallery this Autumn, decided to focus the show exclusively on the work made during and inspired by this trip.

After visiting friends in LA we drove north on the Pacific Coast Highway. It's an amazing landscape, like Cornwall with an attitude. The road snakes for miles and cliffs drop steeply down to the ocean.

In the intervening years from my last visit, my working practice has changed quite a bit. Previously I would sit and make several pieces of work on the spot from start to finish and although I still like this kind of work, I find it quite limiting. Now, when I go anywhere, I find more value and creative possibilities in making energetic sketches, usually on A2 paper. I bring these back to my studio to rework and collage to find more interesting and less obvious compositions.

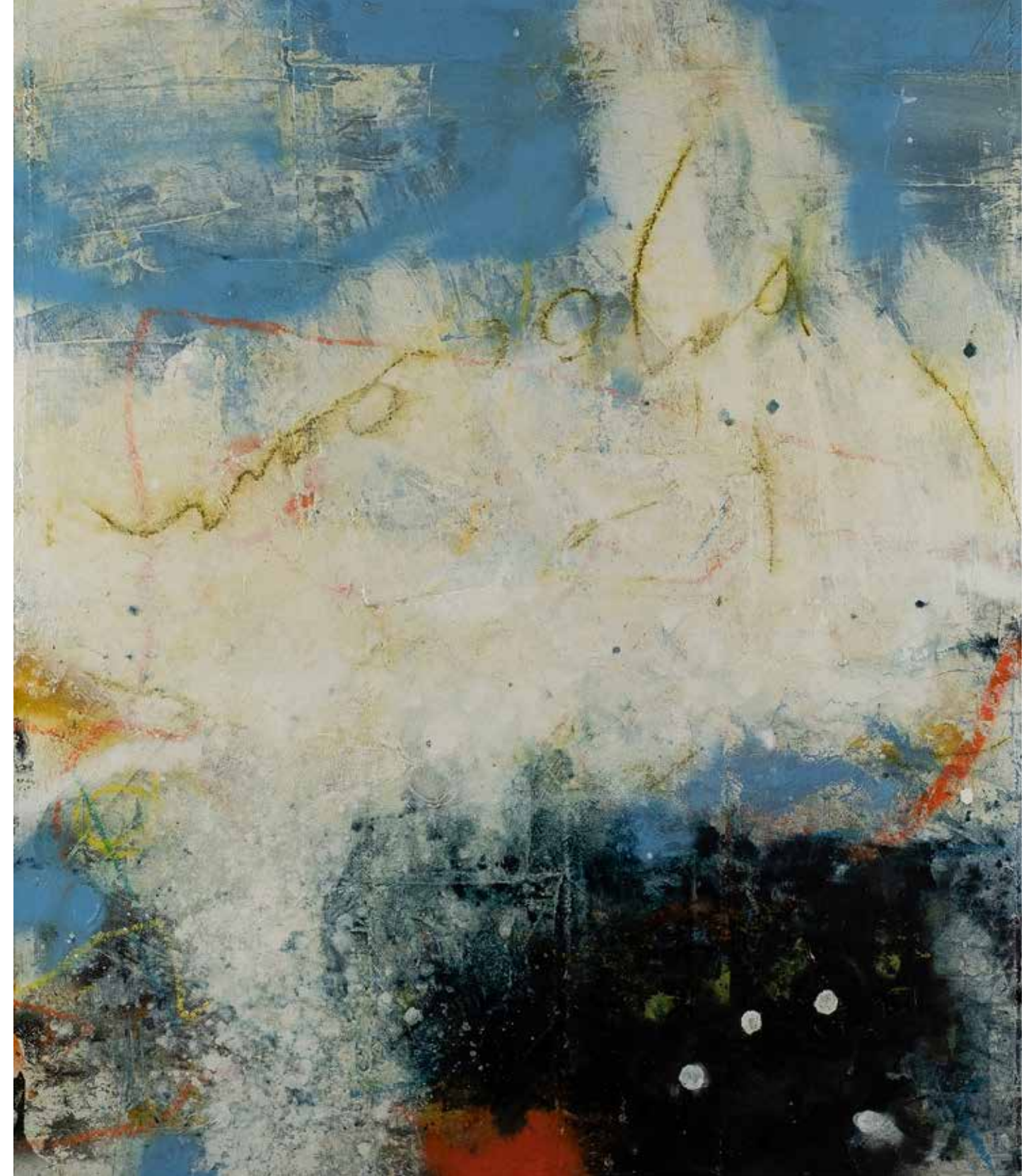
Working this way allows me to explore a place much more freely without concerning myself as to what they might look like when they are finished. I simply react to what's there in front of me, the space, energy, and movement and give the thinking part of my brain a rest for a while.

In my studio, I use these works on paper made in the landscape to inform the paintings on board and canvas. They give me a lot of creative freedom and I can draw on them for inspiration and to put myself back in the place as I work.

In addition, over the past few years I've been making collections of ceramic work alongside my paintings. With ceramics, there's no expectation to make a picture or be representational, so as well as enjoying them for their own sake, I let them influence the paintings and vice versa.

LEWIS NOBLE October 2022

Pounding Wave
oil and mixed media on canvas 120 x 100 cm





Waves, Estero Bluffs, California I
mixed media on gesso panel 30 x 30 cm



Waves, Estero Bluffs, California II
mixed media on gesso panel 30 x 30 cm



Under the Pier, Pismo Beach, California I
mixed media on gesso panel 20 x 20 cm



Under the Pier, Pismo Beach, California II
mixed media on gesso panel 20 x 20 cm

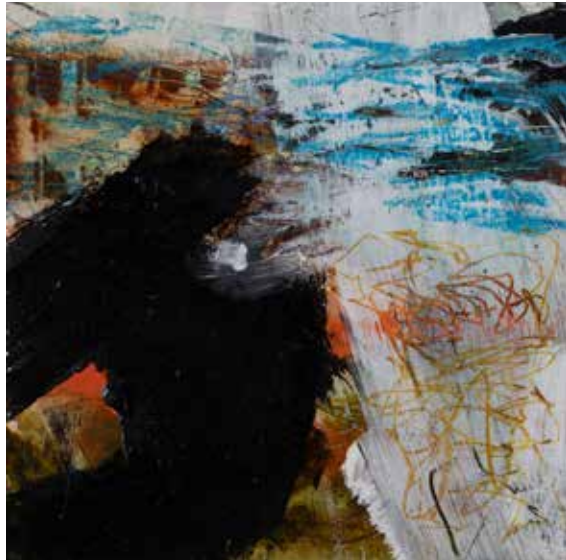


Morro Bay, California I
mixed media on gesso panel 20 x 20 cm



Morro Bay, California III
mixed media on gesso panel 20 x 20 cm

Morro Bay, California
oil and mixed media on canvas 120 x 120 cm



Morro Bay, California IV
mixed media on gesso panel 20 x 20 cm





Waves, Estero Bluffs, California III
mixed media on gesso panel 30 x 30 cm



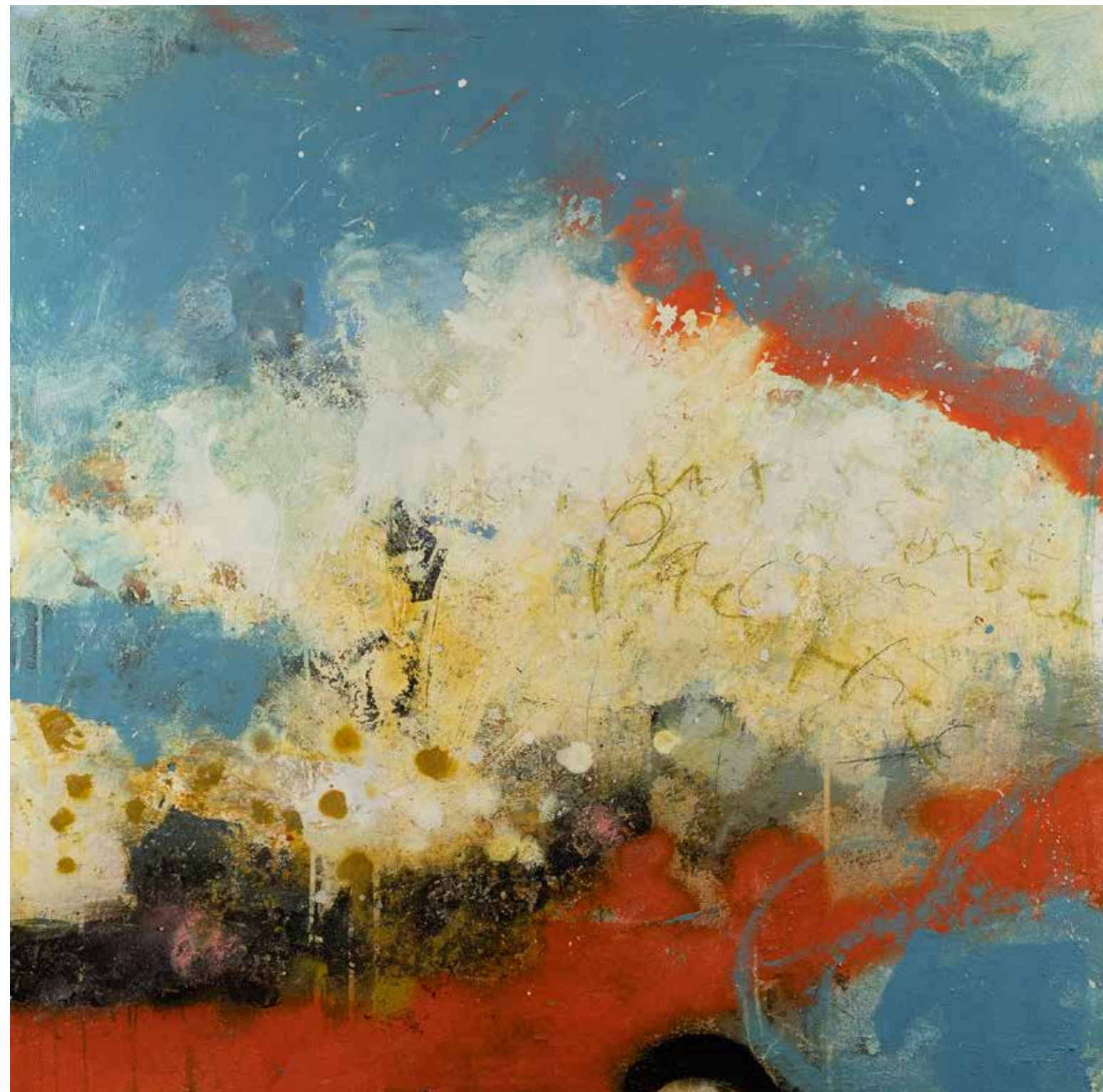
Waves, Estero Bluffs, California IV
mixed media on gesso panel 30 x 30 cm

California Pacific
oil and mixed media on canvas 120 x 120 cm



Estero Bluffs, California I
acrylic and collage on paper 22 x 20

Estero Bluffs, California III
acrylic and collage on paper 22 x 21 cm



Nearly Cut Off by The Tide, Morro Bay
oil and mixed media on canvas 120 x 120 cm



Estero Bluffs, California IV
acrylic and collage on paper 23 x 23 cm

Estero Bluffs, California V
acrylic and collage on paper 24 x 23 cm





Big Sur, California
acrylic and collage on paper 26 × 23 cm

Big Sur, Ragged Point, California
oil and mixed media canvas 120 × 120 cm





Estero Bluffs, California VI
acrylic and collage on paper 23 x 21



Medium Beach Vessel I
stoneware and porcelain 17 cm high



Medium Beach Vessel IV
stoneware and porcelain 25 cm high



Under the Pier, Pismo Beach, California III
mixed media on gesso panel 20 x 20 cm

LEWIS NOBLE

Born 1967, London

Education - 1989-1992 BA (Hons) Fine Art, Birmingham Margaret Street. (UCE)
Selected Exhibitions from 1997 – present Ainscough Contemporary Art, London;
Northcote Gallery, London; Chatsworth House, Artist in Residence Studio Show; Derby
Museum & Art Gallery; Tregoning Gallery, Derby; Byard Art, Cambridge; Bath Con-
temporary; John Martin, London; Hart Gallery, London; Walker Galleries, Harrogate;
Thackeray Gallery, London; Campden Gallery; Courtney Gallery, Ashbourne; Tarpey
Gallery, Castle Donnington

Awards Winner Vickers Art Award, 2001

Private and Public Collections Worldwide

FRONT COVER

When a Wave Hits the Shore, Estero Bluffs, California
oil and mixed media on canvas 120 x 120 cm

BACK COVER

Pier Stanchion I stoneware and porcelain 43 cm high

First published in 2022 by Campden Gallery Ltd, High Street, Chipping Campden,
Gloucestershire GL55 6AG www.campdengallery.co.uk

Copyright © 2022 Campden Gallery Ltd ISBN 978-1-908753-79-3

All rights reserved. No part of this publication may be reproduced, stored in a retrieval
system or transmitted in any form or by any means electrical, mechanical or otherwise
without first seeking the permission of the copyright owners and the publishers.

All images in this catalogue are protected by copyright and should not be reproduced
without permission of the copyright holder. Details of the copyright holders are to be
obtained from Campden Gallery.

Design by Lyn Davies www.lyndaviesdesign.com



Run to the Ocean
stoneware and porcelain 15 cm high

Printed digitally by Park Lane Press on a CO₂ neutral HP Indigo
press on FSC® certified paper, power from 100% renewable
resources. Print production systems registered to ISO 14001,
ISO 9001, and over 97% of waste is recycled.





High Street, Chipping Campden
Gloucestershire GL55 6AG
T 01386 841555
E info@campdengallery.co.uk
W campdengallery.co.uk

